

flagro

INDUSTRIES LIMITED



PRODUCT CATALOGUE

INDIRECT FIRED HEATERS



FVO-400



FVNP-400

MODEL	FVO-400	FVNP-400
Heat Capacity	up to 390,000 btuh	up to 390,000 btuh
Fuel Tank Capacity/Run Time	42 US Gallons/14 hrs	External
Heater Dimensions/Weight	70" x 29" x 52" / 450 lbs	70" x 29" x 47" / 365 lbs
Heater Exchanger	16 Gauge 304 Stainless Steel	16 Gauge 304 Stainless Steel
Air Circulation	2,500 CFM - Ductable up to 50ft	2,500 CFM - Ductable up to 50ft
Air Outlet/Inlet	Outlet - 2 x 12" Dia. or 1 x 16" Dia.	Outlet - 2 x 12" Dia. or 1 x 16" Dia.
Wheels	16" Dia. Flat Free Wheels	16" Dia. Flat Free Wheels
Power Requirements	115V / 15Amp (10.5 Amp Draw)	115V / 15Amp (10.5 Amp Draw)



FEATURES:

Proven Riello burner technology including nozzle pre-heater for cold weather start up and upgraded low temperature fuel pump.

High density flat free wheels, and smart power indicator control Stainless Steel welded heat exchanger

Optional: Tiger-loop fuel filter system that eliminates fuel system air locks & 118 US Gallon Fuel Tank.



FVO-400RC

FVNP-400RC

MODEL	FVO-400RC	FVNP-400RC
Heat Capacity	up to 390,000 btuh	up to 390,000 btuh
Fuel Tank Capacity/Run Time	42 US Gallons/14 hrs	External
Heater Dimensions/Weight	70" x 29" x 54" / 450 lbs	70" x 29" x 54" / 365 lbs
Heater Exchanger	16 Gauge 304 Stainless Steel	16 Gauge 304 Stainless Steel
Air Circulation	4,000 CFM - Ductable up to 150ft	4,000 CFM - Ductable up to 150ft
Air Outlet/Inlet	Oulet - 2 x 12" Dia. or 1 x 16" Dia. Inlet - 1 x 16" Dia.	Oulet - 2 x 12" Dia. or 1 x 16" Dia. Inlet - 1 x 16" Dia.
Wheels	16" Dia. Flat Free Wheels	16" Dia. Flat Free Wheels
Power Requirements	115V / 15Amp (10.5 Amp Draw)	115V / 15Amp (10.5 Amp Draw)



FEATURES:

Proven Riello burner technology including nozzle pre-heater for cold weather start up and upgraded low temperature fuel pump.

Powerful backward incline blower provides ultra-quiet operation & low amperage, ductable up to 150FT.

High density flat free wheels, smart power indicator control and volt meter.

Optional: Tiger-loop fuel filter system that eliminates fuel system air locks & 118 US Gallon Fuel Tank.



FVO-600RCBT



FVNP-600RC

MODEL	FVO-600RCBT	FVNP-600RC
Heat Capacity	540,000 btuh	540,000 btuh
Fuel Tank Capacity/Run Time	118 US Gallons/28 hrs	External
Heater Dimensions/Weight	32.5" x 71" x 72" / 930 lbs	40" x 71" x 54" / 550 lbs
Heater Exchanger	16 Gauge 304 Stainless Steel	16 Gauge 304 Stainless Steel
Fan Motor	4,800 CFM - Ductable up to 150ft	4,800 CFM - Ductable up to 150ft
Air Outlet/Inlet	Oulet - 1 x 20" Dia. or 2 x 12" Dia. Inlet - 1 x 16" Dia.	Oulet - 1 x 20" Dia. or 2 x 12" Dia. Inlet - 1 x 16" Dia.
Wheels	Skid base	16" Dia. Flat Free Wheels 6" Lockable Caster Wheels
Power Requirements	115V / 20Amp (14 Amp Draw)	115V / 20Amp (14 Amp Draw)



FEATURES:

Proven Riello burner technology including nozzle pre-heater for cold weather start up and upgraded low temperature fuel pump.

Powerful backward incline blower provides ultra-quiet operation & low amperage, ductable up to 150FT.

High density flat free wheels, smart power indicator control and volt meter.

The FVO-600RCBT includes Tiger-loop fuel filter system that eliminates fuel system air locks & 118 US Gallon Fuel Tank



FVO-200RC



FVNP-200RC

MODEL	FVO-200RC	FVNP-200RC
Heat Capacity	185,000 btuh	200,000 btuh
Fuel Tank Capacity/Run Time	23 US Gallons / 17 hrs	External
Heater Dimensions/Weight	51.5" x 27" x 48" / 350 lbs	51.5" x 27" x 44" / 300 lbs
Heater Exchanger	16 Gauge 304 Stainless Steel	16 Gauge 304 Stainless Steel
Fan Motor	2,600 CFM - Ductable up to 150ft	2,600 CFM - Ductable up to 150ft
Air Outlet/Inlet	Oulet - 1 x 12" Dia. or 1 x 16" Dia. Inlet - 1 x 12" Dia.	Oulet - 1 x 12" Dia. or 1 x 16" Dia. Inlet - 1 x 12" Dia.
Wheels	12" Dia. Pneumatic Wheels 6" Lockable Caster Wheels	12" Dia. Pneumatic Wheels 6" Lockable Caster Wheels
Power Requirements	115V / 15Amp (6 Amp Draw)	115V / 15Amp (6 Amp Draw)



FEATURES:

Proven Riello burner technology including nozzle pre-heater for cold weather start up and upgraded low temperature fuel pump.
 Powerful backward incline blower provides ultra-quiet operation & low amperage, smart power indicator control and ductable up to 150FT.
 Stackable frame allow for convenient transportation and storage.

INDIRECT FIRED HEATERS



MODEL	FVO-750	FVNP-750
	OIL	DUAL FUEL - LP/NG
Heat Capacity	750,000 btuh	750,000 btuh
Temperature Rise	130°F	130°F
Fuel Consumption	5.2 Gal./hr	37 LBS./hr - 806 CFH
Heat Exchanger	16g 304 S/S	16g 304 S/S
Fan Motor	7.5 HP 7,000 CFM	7.5 HP 7,000 CFM
Fan Control	VFD Standard	VFD Standard
Ignition	Direct Spark Ignition	Direct Spark Ignition
Nozel Size/Gas Pressure	4.50 x 60W @ 160 PSI	Propane - 1.5" W.C. Natural Gas - 2.2" W.C.
Air Outlet	Two 16" Dia.	Two 16" Dia.
Air Inlet	Two 16" Dia.	Two 16" Dia.
Power Requirements	1 PH / 208-230V or 3 PH / 208-230V	1 PH / 208-230V or 3 PH / 208-230V
Amperage Draw	18 AMP @ 1 PH 14 AMP @ 3 PH	18 AMP @ 1 PH 14 AMP @ 3 PH
Approvals	cETLus	cETLus
L x W x H	98" x 36" x 61"	98" x 36" x 61"
Weight	1,390 LBS	1,390 LBS

INDIRECT FIRED HEATERS



Riello burners used exclusively for both oil and LP / NP models. "Plug and Play" burner assembly kit sold separately to convert heater from oil to LP / NG.

Oil units include "Tiger loop" system which allows for single fuel line supply and de-aeration of fuel line providing optimum burner performance.

Equipped with a VFD control allows for "soft start", regulating the fan speed at start up and shut down. It also provides overload motor protection and voltage management

STANDARD EQUIPMENT:

Both 1 phase 208-230v and 3 phase 208-230v power supply connections are included on all models. Waterproof, emergency disconnect provided.

Recessed control panel protects the indicator lights, switches and disconnects, indicator lights show proper burner operations and possible burner lockout.

The reverse inclined blower, powered by the 7.5hp TEFC motor, allows for outlet ducting over 100ft. This pressurized design provides even airflow from both duct outlets.

Proven Flagro heat exchanger design includes fully welded, 16g 304 series stainless steel



POWERFUL, FLEXIBLE AND DEPENDABLE HEAT FOR ANY JOB

The FV-750 indirect fired heater provides 130° F. temperature rise at 7000cfm. Return air duct inlet allows for recirculation of warm inside air and/or pressurization of building as desired. Single phase or three phase power supply operates both burner and fan motor.

Includes integrated fork lift pockets and lift points.
Easy access to burner, fuel lines and electrical controls.
Approved for indoor and outdoor installations.



16" x 25ft Hitex Outlet Ducting
16" x 25ft Ventflex Inlet Ducting



Remote Thermostat Control
c/w 25ft Cord

SELF CONTAINED HEATER TRAILERS

PORTABLE HEAT AND POWER ANYWHERE YOU NEED IT



FVO-1000TR

- Includes 2 x Flagro FVOHC-400 Indirect Fired Heating Units
- Can be equipped with 4 x 12" or 2 x 16" Duct Outlets
- 2 x 3500 LBS Dual Axle, 4 x 15" Galvanized Rims with Radial Tires
- Yanmar or Kubota 8KW / Stamford Newage Combo Genset
- Diesel Tank with Full Fuel Containment
- Solid Steel Welded Channel Frame and Floor
- Electric Emergency Second Axle Brakes
- Safety Chains, Ball or Pintle Hitch, Jack
- Duct Storage



FVO-400TLRC

- Includes 1 x Flagro FVOHC-400 Indirect Fired Heating Units
- Can be equipped with 2 x 12" or 1 x 16" Duct Outlets
- 1 x 5000 LBS Dual Axle, 2 x 15" Galvanized Rims with Radial Tires
- Yanmar or Kubota 8KW / Stamford Newage Combo Genset
- Diesel Tank with Full Fuel Containment
- Solid Steel Welded Channel Frame and Floor
- Electric Emergency Second Axle Brakes Included
- Safety Chains, Ball or Pintle Hitch, Jack Included

SELF CONTAINED HEATER TRAILERS

ENGINES:	Yanmar or Kubota Liquid Cooled Diesel
	Electric Start / Glow Plugs Battery charging alternator Heavy Duty Radiator and Air Cleaner
HEATERS:	
FVO-1000TR	2 x FVOHC-400 Flagro Indirect Fired Heaters
FVO-400LTR	1 x FVOHC-400 Flagro Indirect Fired Heaters
FUEL CONSUMPTION:	
FVO-1000TR	Engine - 1.08 GPH at full load Heaters - 400,000 btuh x 2 @ 2.75 GPH 44 hour run time before refuelling
FVO-400LTR	Engine - 1.08 GPH at full load Heater - 400,000 btuh x 1 @ 2.75 GPH 78 hour run time before refuelling
GENERATORS:	Stamford Newage Generator
FVO-1000TR	Single Phase - 120 V Instrument Panel includes keyed ignition and hour meter 8 kw @ 1800 rpm (14 HP)
FUEL TANKS:	
FVO-1000TR	1100 litres / 299 US gallons
FVO-400LTR	Polyethylene construction Fuel sight gauge and door 4" fuel inlet nozzle mounted at the side of the trailers for ground access refuelling
DIMENSIONS:	
FVO-1000TR	Length - 15 ft, Width - 7 ft-4in, Height - 7 ft Weight - 4000 lbs (empty)
FVO-400LTR	Length - 12, Width - 7 ft-4 in, Height - 7 ft Weight - 4290 lbs (empty)
DUCT CABINET:	Standard Duct Cabinet supplied on FVO-1000TR
LIGHT TOWER:	
FVO-400LTR	2 x 1000 W lights 9 ft - 2 stage mast
APPROVALS:	CSA & ESA approved DOT approved trailer



HEATER APPLICATIONS



DUCTABLE DIRECT FIRED HEATERS



THC-175DF & THC-85



THC-355CDF

MODEL	THC-85	THC-175DF	THC-355CDF
Propane	THC-85P	THC-175DF - dual fuel	THC-355CDF - dual fuel
Natural Gas	THC-85N	THC-175DF - dual fuel	THC-355CDF - dual fuel
Fuel Consumption	3.8 lbs/hr - 82 CFH	8 lbs/hr - 175 CFH	16 lbs/hr - 307 CFH
Ignition System	Direct Spark	Direct Spark	Direct Spark
Heat Capacity	85,000 btuh	175,000 btuh	330,000 btuh
Heated Air Output	450 CFM	1,200 CFM	2,600 CFM
Power Requirement	115V/60Hz/1ph/15amp	115V/60Hz/1ph/15amp	115V/60Hz/1ph/15amp
Thermostat	20ft Cord for remote location	20ft Cord for remote location	20ft Cord for remote location
Shipping Weight	135 lbs	193 lbs	390 lbs
Net Weight	122 lbs	164 lbs	345 lbs
Net Weight	122 lbs	164 lbs	345 lbs
L x W x H	31" x 22" x 27"	35" x 24" x 33"	47" x 32" x 42"



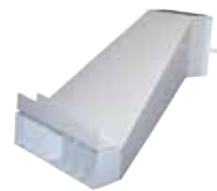
**THCP-DD and
THCP-WD12**



**THCP-DD
THCP-DD18**



**THCP-WD12
THCP-WD18**



**THCP-HD85
THCP-HD175**

IDEAL FOR TENT AND CONSTRUCTION HEATING APPLICATIONS

Thermostatically controlled for a consistent, comfortable environment
 Operates as both a fresh air circulator or a heater at the touch of a switch
 Ducting options allow for heat to be directed to specific areas
 Quiet, efficient, easy to set-up, rugged design

ELECTRIC HEATERS



FLE-60



**FLE-60 with 20"
Duct and Adaptor**

HEAT SETTING	BTUH	CFM	TEMPERATURE RISE	NOISE RATING
60kw	205,000 btuh	3300 cfm	110°F/43°C	67 db
40kw	137,000 btuh	2800 cfm	85°F/30°C	63 db
20kw	68,000 btuh	2450 cfm	50°F/10°C	63 db
Fan Only		3900 cfm		71 db

ELECTRICAL SUPPLY	480 volt or 575 volt models available
STATIC PRESSURE	1/2" W.C.
MOTOR/BLOWER	1 1/2 HP - Belt Drive
DUAL AIR INLET	16" x 16" inlet (20" ductable return)
OUTLET	18" x 13" outlet (20" ductable supply)
L x W x H	32" x 48" x 25.5"
WEIGHT	290 lbs
OPTIONS: FLE-HDG20	20" x 25ft Hitex Outlet Ducting
FLE-HDV20	20" x 25ft Ventflex Inlet Ducting
FLE-DA60S20	Inlet Ducting Adapter - 2 req/unit
FLE-DA60F20	Outlet Ducting Adapter
FV-THB	Thermostat c/w 25 ft cord

QUIET, FLEXIBLE AND DEPENDABLE ELECTRIC HEAT FOR ANY JOB

Permanent cleanable inlet filters prevent particles at jobsite from contaminating heating element and controls

Fan speed inverter control provides optimum temperature rise by adjusting blower output at each heat setting

Convenient colour coded cam lock power connections for easy installation

Simplified control panel design allows for easy operations at 60Kw, 40Kw & 20Kw inputs

Air flow and high temperature indicator lights incorporated on recessed control panel

Optional remote thermostat c/w 25ft cord



FLE-150

HEAT SETTING	BTUH	CFM	TEMPERATURE RISE	NOISE RAITING
150 kw	512,000 btuh	6300 cfm	120° F / 49 deg C	83 db
90 kw	307,000 btuh	5800 cfm	88° F / 31 deg C	81 db
60 kw	205,000 btuh	4600 cfm	56° F / 13 deg C	76 db
Fan only		6800 cfm		85 db

ELECTRICAL SUPPLY	480 volt or 575 volt models available
STATIC PRESSURE	1/2" W.C.
MOTOR / BLOWER	7-1/2 hp - Direct Drive
AIR INLET	20" ductable return
OUTLET	20" ductable supply
L X W X H	66" x 36" x 40"
WEIGHT	560 lbs
APPROVAL	CSA & ESA approved for indoor and outdoor use

QUIET, FLEXIBLE AND DEPENDABLE ELECTRIC HEAT FOR ANY JOB

Fan speed inverter control provides optimum temperature rise by adjusting blower output at each heat setting.

Convenient colour coded cam lock power connections for easy installation.

Simplified control panel design allows for easy operations at multiple inputs.

Air flow and high temperature indicator lights incorporated on recessed control panel.

Optional remote thermostat c/w 25 ft cord

DIRECT FIRED CONSTRUCTION HEATERS



F-150

Adjustable heat from 50,000 to 150,000 btuh



F-375

Adjustable heat from 220,000 to 375,000 btuh

MODEL	F-150	F-375
Fuel	Vapor Propane	Vapor Propane
Heat Capacity	Max 150,000 btuh Min 50,000 btuh	375,000 btuh 220,000 btuh
Manifold Pressure	2-1/4 to 20 PSI	7 to 20 PSI
Hose Length	20ft is standard	20ft is standard
Regulator With POL	Adjustable to 20 PSI max.	Adjustable to 20 PSI max.
Approval	UL of Canada Listed	UL of Canada Listed
Weight	32 lbs	65 lbs
L x W x H	30" x 11.25" x 14"	42" x 17" x 22"
Air Outlet	8" Diameter	13" Diameter
Fuel Consumption	2.3 to 6.9 lbs/hr	10.1 to 17.3 lbs/hr
Ignition	Manual	Manual
Optional Fan	N/A	800 CFM fan assembly (120V)



2001-S2
2 cylinder manifold



2001-S3
3 cylinder manifold

DEPENDABLE HEAT WHENEVER YOU NEED IT

- Engineered for simple operation and minimal servicing
- Light and highly portable
- Stackable for easy transportation and storage
- Designed to operate without a fan or electricity
- Temporary heat for use during construction and maintenance



ALL THE HEAT YOU NEED

- Thermostatically controlled
- Filterless design
- Heavy duty frame under 50 pounds
- Recessed controls to eliminate damage
- Stackable for easy storage and transportation
- Improved maintenance accessibility
- Your choice of natural gas or propane



FRHR - 100N



MODEL	FRHR-100N (Natural Gas)	FRHR-100P (Propane)
Heat Capacity	Natural Gas 90,000 btuh	Propane 90,000 btuh
Manifold Pressure	Natural Gas 7.0" W.C.	Propane 10.0" W.C.
Fuel Consumption	100 CFH	5 lbs./hr
Approval	cWHus - Warnock Hersey	cWHus - Warnock Hersey
Weight	47 lbs	47 lbs
L x W x H	16" x 16" x 35"	16" x 16" x 35"
Ignition	Manual/Standing Pilot	Manual/Standing Pilot
Standard	Thermostat Control	Thermostat Control
Inlet	3/8" FNPT	3/8" FNPT



FRHP-101

Hose Assembly



MAN-E1

Single Manifold



MAN-E2

Dual Manifold

DUAL FUEL CONSTRUCTION HEATERS



F-400T



F-1500T

MODEL	F-400T	F-1000T	F-1500T
Fuel	Propane or Natural Gas	Propane or Natural Gas	Propane or Natural Gas
BTU/hr	400,000 btuh	1,000,000 btuh	1,500,000 btuh
Low Fire BTU/hr	N/A	N/A	650,000 btuh
Fuel Consumption			
Propane	18.5 lbs/hr	46 lbs/hr	69 lbs/hr
Natural Gas	380 CFH	952 CFH	1428 CFH
Inlet Pressure			
Propane	11" W.C. MAX	11" W.C. MAX	11" W.C. MAX
Natural Gas	4.0" W.C. MIN	10" W.C. MIN	10" W.C. MIN
Power Requirement	115V/60Hz/1PH/15Amp	115V/60Hz/1PH/20Amp	115V/60Hz/1PH/20Amp
Fan Motor	1/3 HP	1 HP	1 HP
Air Circulation	2,000 CFM	7,000 CFM	7,000 CFM
Ignition	Direct Spark Control	Direct Spark Control	Direct Spark Control
Thermostat Control	Yes	Yes	Yes
L x W x H	48" x 22" x 24"	61" x 29" x 38"	61" x 29" x 38"
Air Outlet	15" Diameter	26" Diameter	26" Diameter
Weight	90 lbs	356 lbs	360 lbs

REQUIRED EQUIPMENT FOR HEATER INSTALLATIONS

Recommended For Model No.	Second Stage Regulator*	Typical Hose Assembly
F-400T	B42R0.75 (3/4" NPT)	S52180-12 3/4" x 15ft Hose Assembly
F-1000T	B42R1.25 (1-1/4" NPT)	S54180-20 1 1/4" x 15ft Hose Assembly
F-1500T	B31R1.25 (1-1/4" NPT)	S54180-20 1 1/4" x 15ft Hose Assembly

Note: *Regulator sizing assumes job site inlet pressure of 2-10 PSI.
 **Custom hose assemblies are available upon request.



Ventless regulator available on request





FMA-2300/FMA-1500



FMA-550

MODEL	FMA-2300	FMA-1500	FMA-550
Heat Capacity	330,000 to 2,300,000 btuh	330,000 to 1,500,000 btuh	220,000 to 550,000 btuh
Fuel	Propane or Natural Gas	Propane or Natural Gas	Propane or Natural Gas
Fuel Consumption	Propane - 106 lbs/hr Natural Gas - 1900 CFH	Propane - 69.5 lbs/hr Natural Gas - 1425 CFH	Propane - 25.5 lbs/hr Natural Gas - 523 CFH
Heater Dimensions/Weight	96" x 47" x 51" / 1900 lbs	68" x 38" x 51" / 1275 lbs	56" x 28" x 43" / 480 lbs
Air Circulation	15,000 CFM	8,800 CFM	4,400 CFM
Ignition	Hot Surface Ignitor	Hot Surface Ignitor	Hot Surface Ignitor
Gas Pressure	5 PSI	5 PSI	5 PSI
Wheels	Skid Base	Skid Base	2 x Lockable Swivel / 2 x Casters
Power Requirements	208-230V/60Hz/3PH/35Amp or 600V/60Hz/3PH/15Amp	208-230V 3 Phase/15Amp or 600V/60Hz/3PH/15Amp	115V/60Hz/3PH/20Amp



FEATURES:

- Modulating controls provide constant outlet temperature to the jobsite.
- Freeze-stat prevents unheated air entering the desired area.
- Mild weather-stat option allows for significant fuel savings.
- Provides high volume of heated fresh air to the jobsite.
- Thermostatically controlled.

NORTH AMERICAN MADE





AMF-50



AM-140

MODEL	AMF-50	AM-140
Air Circulation	5,000 CFM	14,000 CFM
Fan Blade	20" Diameter	42" Diameter
Dimensions	23" W x 25" H x 16" D	24" W x 48" H x 24" D
Weight	69 lbs	200 lbs
Power Supply	1/2 HP - 120V/15 Amp	3/4 HP - 120V/15 Amp
Application	Construction, Industrial, Agricultural	Construction, Industrial, Agricultural

REDUCE YOUR HEATING COSTS BY INCREASING AIR CIRCULATION

Year round job-site circulation
 Durable construction
 Ideal for construction sites, factories, mills, barns, warehouses. etc.
 Explosion proof motor option available

PROPANE TORCH KITS



FT15-250

PRE-ASSEMBLED TORCH, HOSE & REGULATOR KITS

MODEL	Description
FT15-100	FT-100, 15ft hose and regulator (25,000 to 80,000 BTUs)
FT15-250	FT-250, 15ft hose and regulator (90,000 to 300,000 BTUs)
FT15-500	FT-500, 15ft hose and regulator (110,000 to 410,000 BTUs)

Other hose lengths available

TORCHES EQUIPPED WITH 100% SAFETY SHUT-OFF SYSTEM

MODEL	Description
FT15-250SV	Kit complete with FT-250SV Torch, 15ft hose and regulator
FT15-500SV	Kit complete with FT-500SV Torch, 15ft hose and regulator
FT-250SV	Torch only (90,000 to 300,000 BTUs)
FT-500SV	Torch only (110,000 to 410,000 BTUs)



FT-250SV

INSTANT HEAT WHEN YOU NEED IT

Provides instant heat for many applications
Heavy duty design and construction

Adjustable heat to suit your many needs:

- asphalt melting
- stress relieving
- drying roofs
- thawing/ice melting
- weed burning
- preheating for welding



1230VK1 Fitted
Regulator Kit



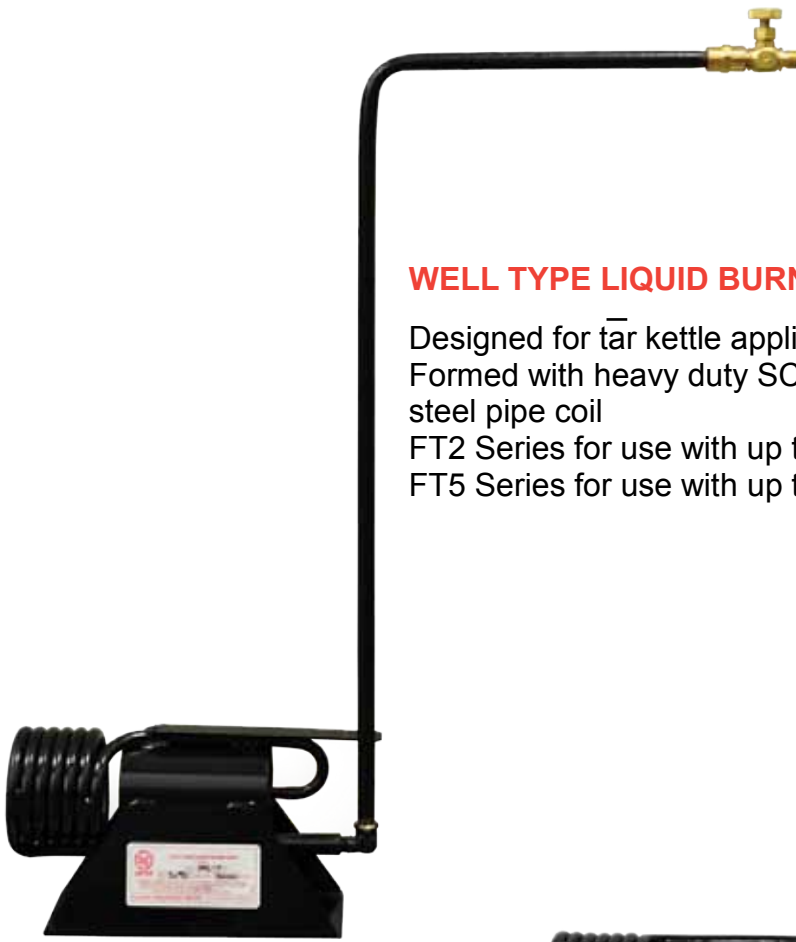
34180-4
15ft Hose
Assembly



LIQUID TORCHES AND BURNERS

WELL TYPE LIQUID BURNERS

Designed for tar kettle applications
 Formed with heavy duty SCH 80 steel pipe coil
 FT2 Series for use with up to 4" flues
 FT5 Series for use with up to 6" flues



MODEL	BTU
FT2-3	300,000
FT2-5	500,000
FT2-7	700,000
FT2-9	900,000
FT5-10	1,000,000
FT5-15	1,500,000
FT5-20	2,000,000

STRAIGHT LIQUID BURNERS

Formed with heavy duty SCH 80 steel pipe coil
 Used as asphalt melters, crop dryers and high pressure water heaters



MODEL	BTU
FT1-3	300,000
FT1-5	500,000
FT1-7	700,000
FT1-9	900,000
FT4-10	1,000,000
FT4-15	1,500,000
FT4-20	2,000,000



LIQUID TORCHES

Ideal torch where high outlet is required
 Allows full use of fuel in propane cylinder
 FT6 Series provided with 2 ft handle
 FT8 Series provided with 4 ft handle

MODEL	BTU
FT6-3	300,000
FT6-5	500,000
FT6-7	700,000
FT6-9	900,000
FT8-10	1,000,000
FT8-15	1,500,000
FT8-20	2,000,000



Flagro Industries Limited has been manufacturing propane, natural gas, and oil fired temporary heating equipment in St. Catharines, Ontario, Canada for over 30 years. Founded by Bruce Watson in 1978, Flagro remains a privately owned company offering a wide spectrum of gas and oil related products to both business and consumers from their office and plant near the U.S. border.

The product line has expanded many times over the years to include a comprehensive array of propane, natural gas, and oil fired temporary heaters, liquid and vapour propane burners and torches, air movers and roofing and road maintenance equipment.



Flagro manufactures the Silver Giant commercial gas grill product line for the hospitality and rental industries. Flagro also designs and manufactures specialty equipment and burner systems to specific customer applications. Every product manufactured by Flagro is tested by qualified technicians before it is shipped from the plant to ensure that it meets applicable regulatory and safety standards.

MINIMUM ORDER	No order is too small.
SPECIAL ORDERS	Any item considered as 'special' (ie. custom hose assembly) is not subject to return.
FREIGHT	Flagro ships daily, using several of the common carriers & couriers. If you have a preference, please advise us at the time you place your order. All shipments are FOB St. Catharines, ON unless otherwise agreed upon.
RETURNS	All returns require prior approval and an RGA #. To ensure proper handling of your return and credit, please obtain an RGA # from our sales staff.
TERMS	Net 30 days, unless otherwise agreed upon.



Telephone 905-685-4243 Fax 1-877-685-0113
www.flagro.ca

flagro

INDUSTRIES LIMITED



Flagro Industries Limited
26 Benfield Drive, St. Catharines, Ontario, Canada L2S 3V5
905 · 685 · 4243

www.flagro.ca